



PlayStation

NTSC U/C

PlayStation™

ARCADE CLASSICS!

# LETHAL ENFORCERS™

I & II



MATURE

M

AGES 17+  
CONTENT RATED BY  
ESRB

SLUS-00293



KONAMI.

## **WARNING: READ BEFORE USING YOUR PLAYSTATION™ GAME CONSOLE.**

A very small percentage of individuals may experience epileptic seizures when exposed to certain light patterns or flashing lights. Exposure to certain patterns or backgrounds on a television screen or while playing video games, including games played on the PlayStation game console, may induce an epileptic seizure in these individuals. Certain conditions may induce previously undetected epileptic symptoms even in persons who have no history of prior seizures or epilepsy. If you, or anyone in your family, has an epileptic condition, consult your physician prior to playing. If you experience any of the following symptoms while playing a video game – dizziness, altered vision, eye or muscle twitches, loss of awareness, disorientation, any involuntary movement, or convulsions – IMMEDIATELY discontinue use and consult your physician before resuming play.

## **WARNING TO OWNERS OF PROJECTION TELEVISIONS:**

Still pictures or images may cause permanent picture-tube damage or mark the phosphor of the CRT, avoid repeated or extended use of video games on large-screen projection televisions. Refer to your projection TV instruction manual for more details.

## **HANDLING YOUR PLAYSTATION™ DISC:**

- This compact disc is intended for use only with the PlayStation game console.
- Do not bend it, crush it or submerge it in liquids
- Do not leave it in direct sunlight or near a radiator or other source of heat.
- Be sure to take an occasional rest break during extended play.
- Keep this compact disc clean. Always hold the disc by the edges and keep it in its protective case when not in use. Clean the disc with a lint-free, soft, dry cloth, wiping in straight lines from center to outer edge. Never use solvents or abrasive cleaners.

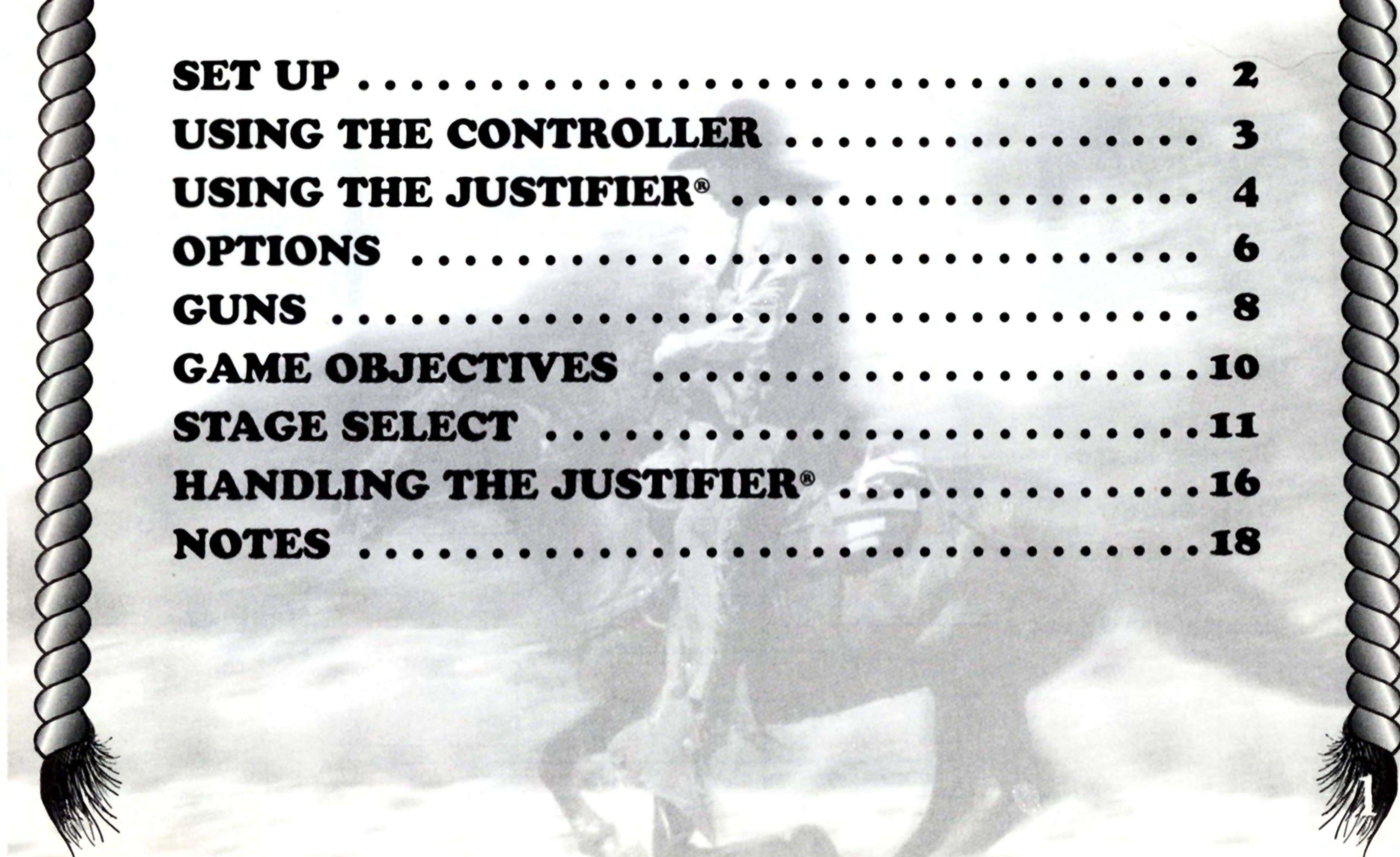
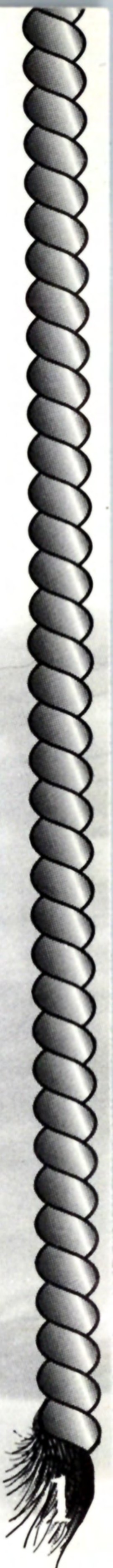
# LETHAL ENFORCERS™



**Arcade Shooting Action**

## TABLE OF CONTENTS

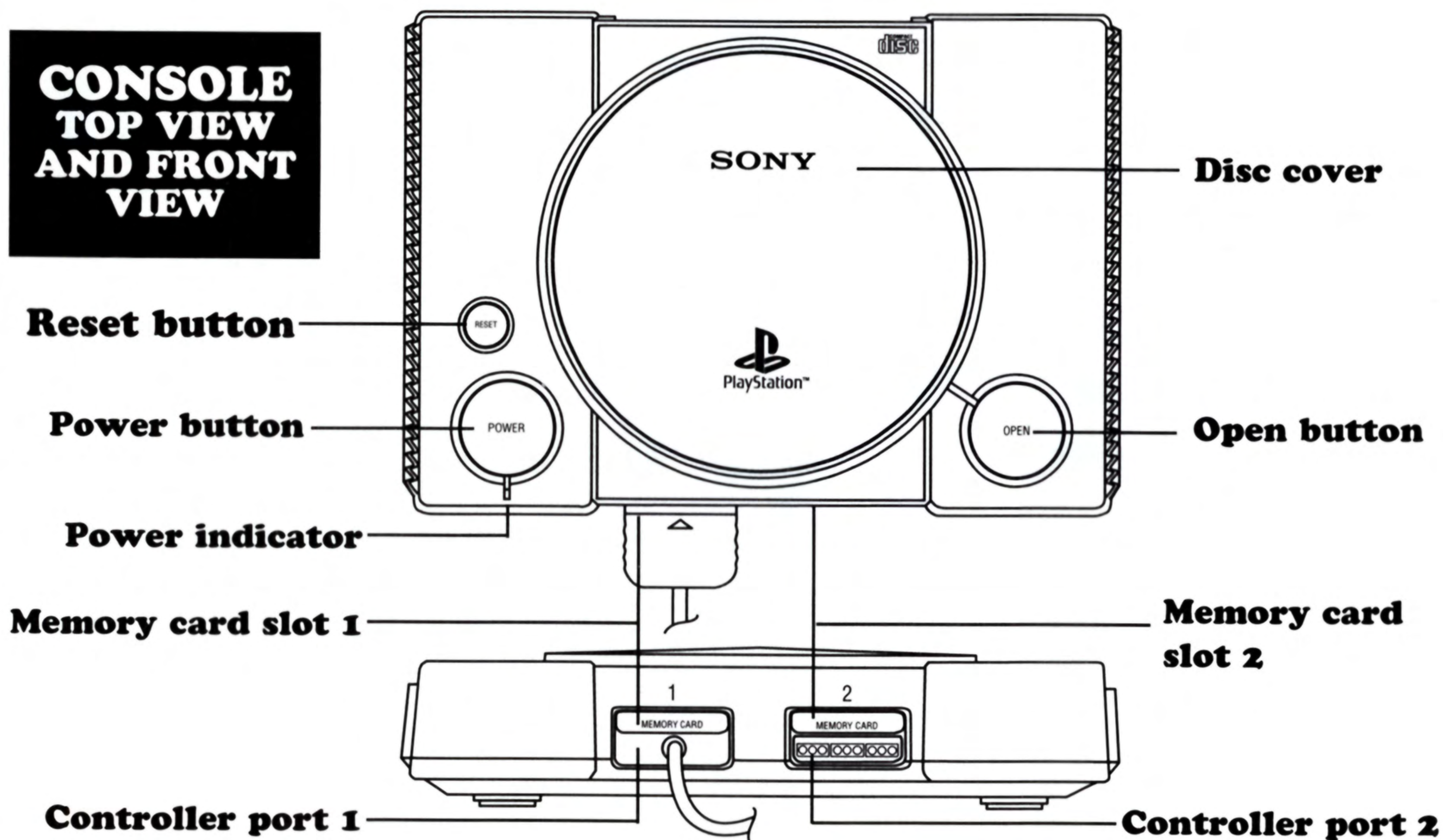
<b>SET UP</b> .....	<b>2</b>
<b>USING THE CONTROLLER</b> .....	<b>3</b>
<b>USING THE JUSTIFIER®</b> .....	<b>4</b>
<b>OPTIONS</b> .....	<b>6</b>
<b>GUNS</b> .....	<b>8</b>
<b>GAME OBJECTIVES</b> .....	<b>10</b>
<b>STAGE SELECT</b> .....	<b>11</b>
<b>HANDLING THE JUSTIFIER®</b> .....	<b>16</b>
<b>NOTES</b> .....	<b>18</b>



## SETTING UP THE CONSOLE

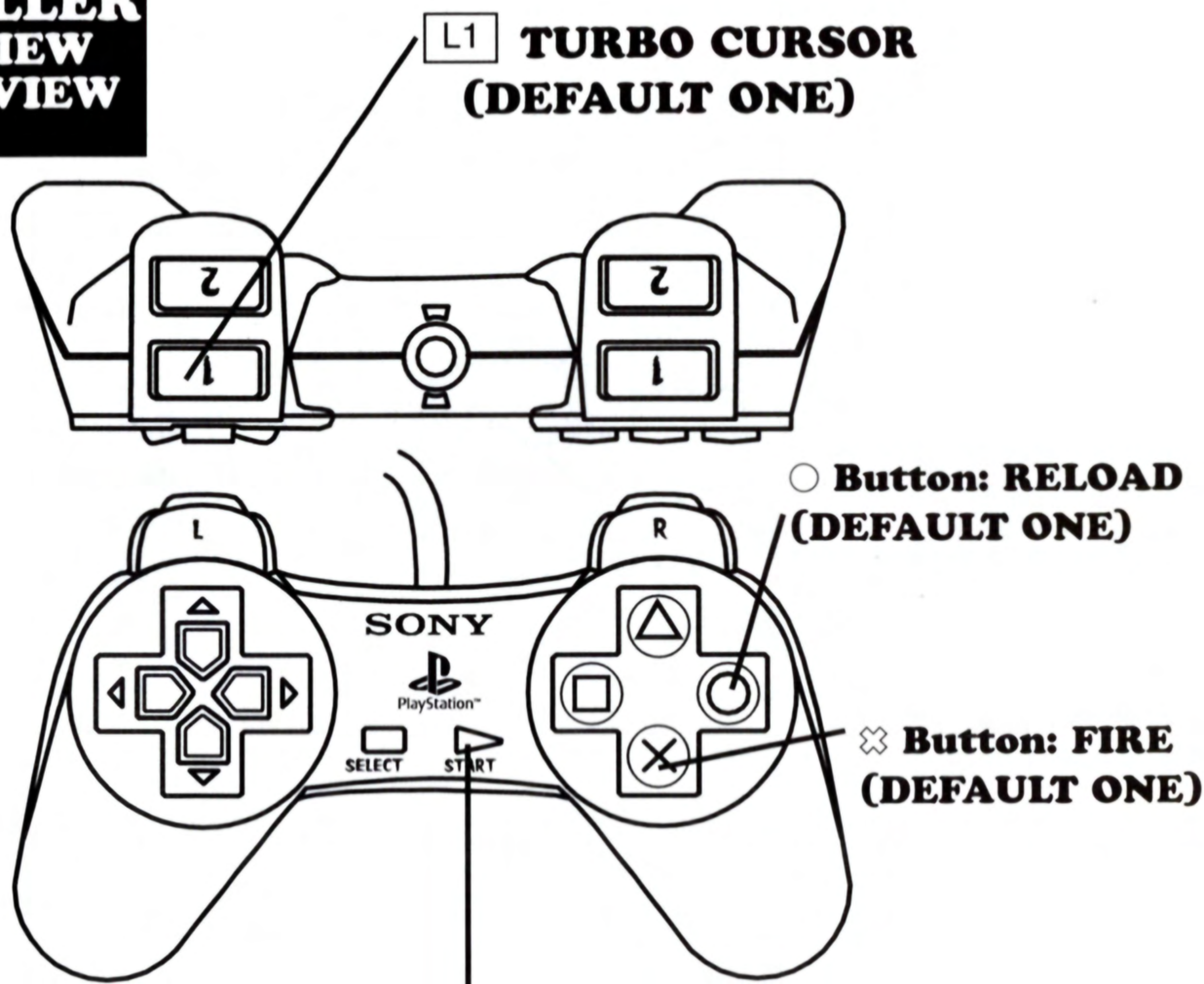
Set up your PlayStation™ game console according to the instructions in its Instruction Manual. Make sure the PlayStation power is off before inserting or removing a compact disc. Insert the Lethal Enforcers™ I & II disc and close the Disc Cover. Insert game controllers and turn on the PlayStation™ game console. Follow on-screen instructions to start a game.

Thank you very much for purchasing Konami's Lethal Enforcers™ I & II. Before playing, please read this manual carefully to ensure correct use.



## USING THE CONTROLLER

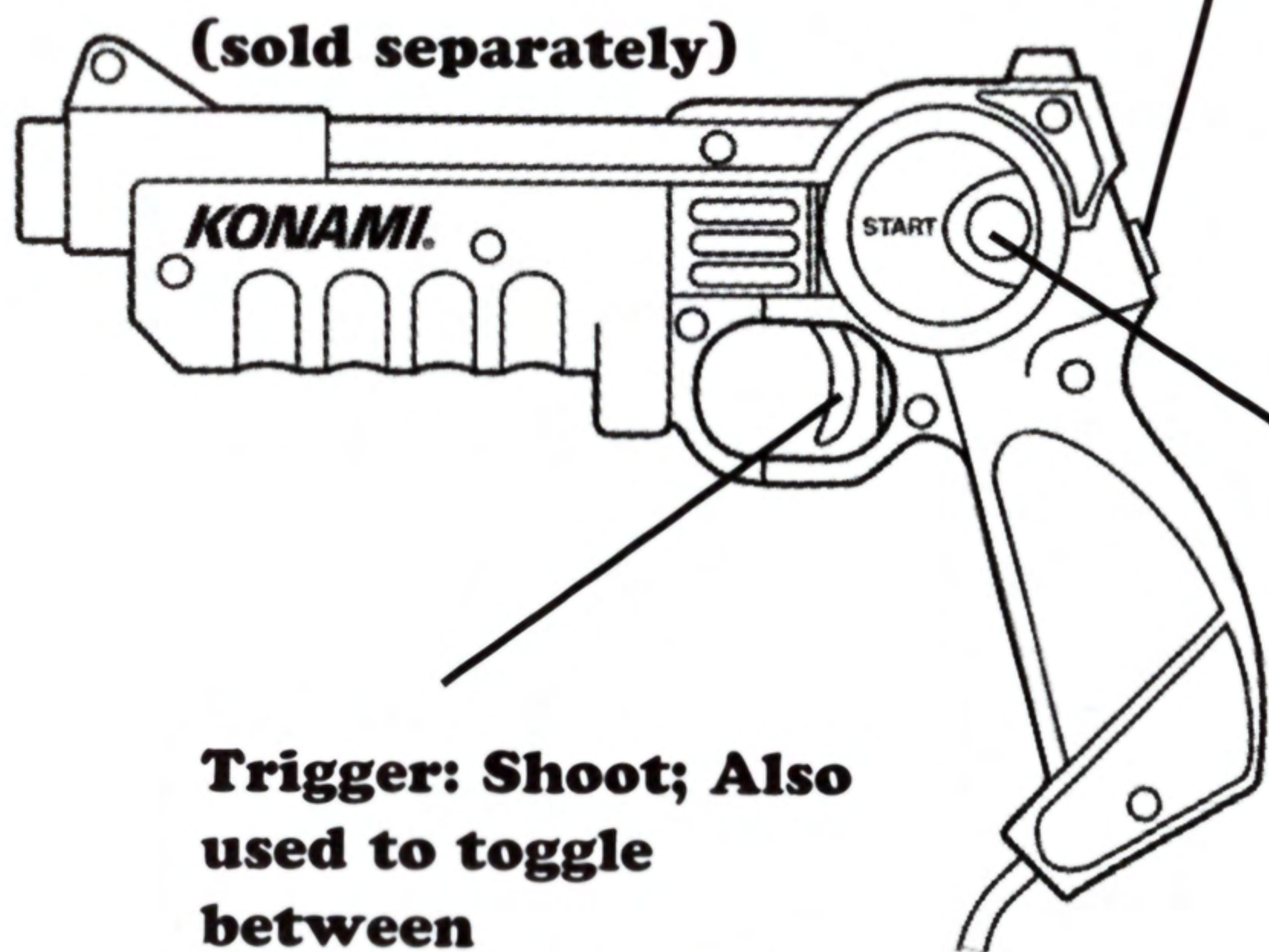
### CONTROLLER FRONT VIEW AND TOP VIEW



**Start Button: Pause during game; also used to select an item on main menu or toggle between settings in the options screen menu**

## USING THE JUSTIFIER®

**GUN  
SYSTEM  
SIDE VIEW**



(sold separately)

**Trigger: Shoot; Also  
used to toggle  
between  
Items/Settings in  
the menu screens**

**CHANGE A SELECTION  
IN OPTIONS SCREEN**

**Start Button: Pause  
during game; also used  
to select an item setting  
in the menu screens**

**Reload - you must point your gun off screen and pull the trigger to refill  
your ammo supply**

## JUSTICE IS BLIND

Maybe in the courtroom, but in the streets, that's a load of bull%# \* @! It hasn't changed a whole lot in the last hundred years. In the old West, when a bank robber jumped on his horse and started firing his six-shooter, justice wasn't blind. Justice was standing at the end of a dirt-paved street, wearing a badge and aiming down the barrel of a Winchester rifle.

And if you're a modern law enforcer, you can't have your eyes closed for a second when a desperate hijacker with an uzi thinks you're the only thing standing in the way of freedom. Blind justice winds up on a slab. You think I'm kidding? Try it. Plug in your Justifier® and play the game with your eyes closed. See how long you last.

# LETHAL ENFORCERS™

1&II

## WELCOME TO THE CLASSICS

Lethal Enforcers™ I & II have been huge hits in the arcades for years. Now you can enjoy all the excitement at home. Boot up the game and get through the legal screens to the Game Select Screen (shown below). Point your Justifier® at one of the arcade classics and shoot. You're on your way!





# LETHAL ENFORCERS™

1&11

## OPTIONS MENU

### GAME MODE

#### STREET:

Allows you to select which stage you want to play

#### Arcade:

Play each stage one after the other. Some bonus stages can be accessed exclusively in that mode.

### DIFFICULTY

(DEFAULT=MEDIUM)

There are eight levels, ranging from **EASIEST** to **HARDEST**.



**BLOOD MODE**  
Select On/Off

**SOUND FX VOLUME**  
Lets you adjust the sound effects volume level.

**MUSIC VOLUME**  
Lets you adjust the music volume level.

## CONTROL CONFIGURATION

Switches the buttons on the Controller.



## GUN CALIBRATION

Lets you "center" your gun's sights to get an accurate reading on your targets. To set aim at middle of target and shoot. If your gun is miscalibrated aim off screen, pull the trigger and try again.



# LETHAL ENFORCERS™

1811

## LE I GUNS

You're packin' a standard-issue, six-round service revolver to begin, but there are plenty of opportunities to upgrade your "hardware".

### MACHINE GUN

- ▶ Hold down the Fire button to unleash a fury of bullets; holds 36 rounds and cannot be reloaded.



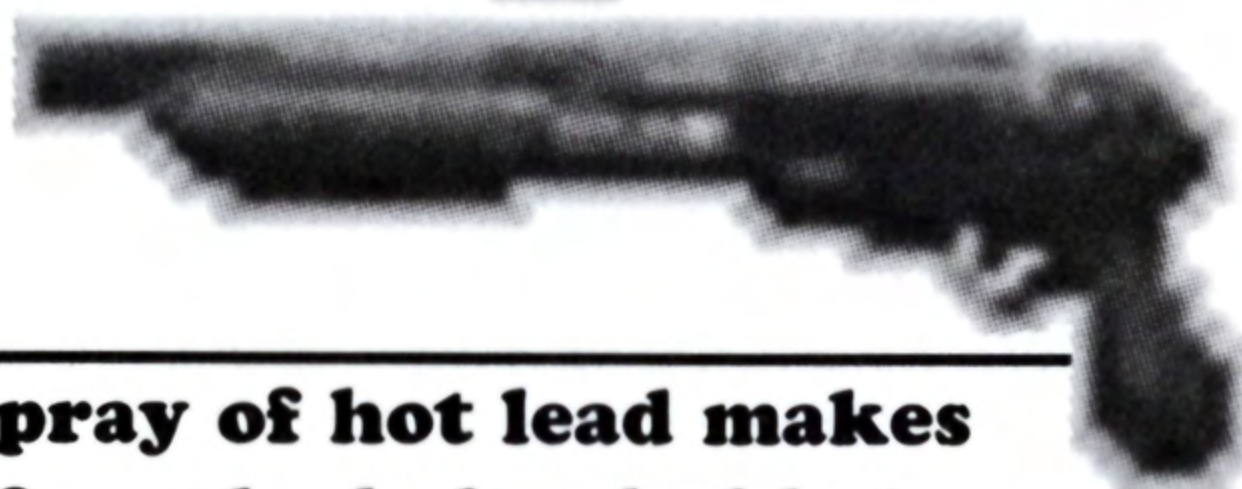
### RIFLE

- ▲ Press the Fire button to let off 3 rounds at a time; holds 12 rounds.



### SHOTGUN

- ▲ A spray of hot lead makes up for a bad aim; holds 6 rounds.



### MAGNUM

- ▶ One single, powerful shot at a time, but it's enough to stop a freight train.



### GRENADE GUN

- ▲ Holds 8 rounds of pure destructive force.



### AUTOMATIC

- ▶ Similar to your standard service revolver, but it holds 12 rounds.



# LETHAL ENFORCERS™

1&11

## LE II GUNS

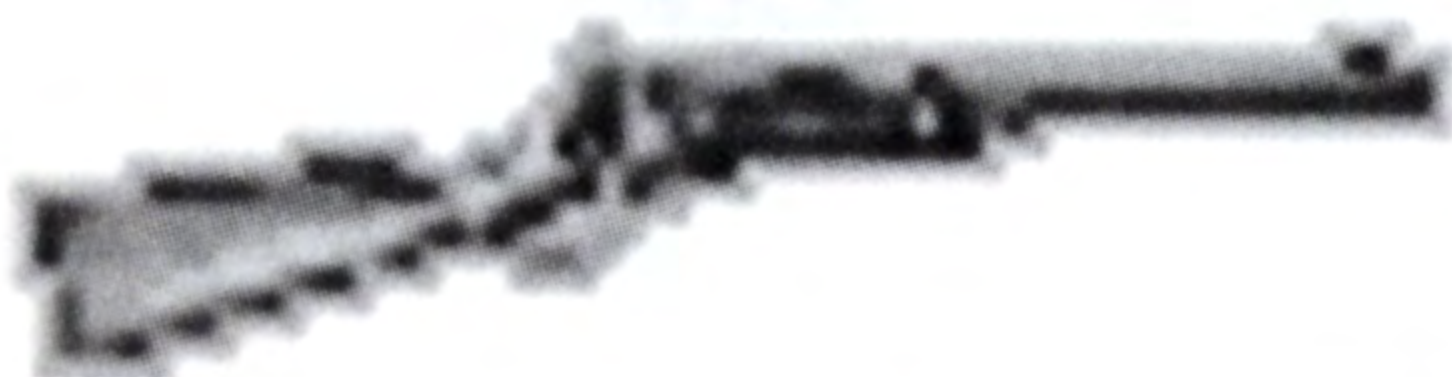
In the Old West, a lawman without his trusty "Peacemaker" was, well, usually found in a hole six feet under. Sometimes, though, the big guns had to be brought out.

### 50 CALIBER SHARP



- ▲ Hold down the Fire button to unleash a fury of bullets; holds 5 rounds and cannot be reloaded.

### RIFLE



- ▲ This is where the phrase "Long arm of the law" originated. Holds 12 rounds.

### SHOTGUN



- ▲ Packs enough wallop to drop a bandito at 100 paces. Holds 6 rounds.

### CANNON

- ▶ It may not be subtle, but blasting through walls does give you the element of surprise! Holds 8 rounds and can't be reloaded



### DOUBLE RIG

- ▶ What could be better than having a loaded six-shooter in your hands? That's right, having 2 in your hands.



### GATLING GUN

- ▶ Hold down the Fire button to lay down a blanket of ammo to drop the outlaws in their tracks. Holds 36 rounds and can't be reloaded.



## GAMEPLAY

A player can begin a new game by pressing the start button on the gun or controller. Depending on the game mode selected in the options screen, a stage select screen will be presented on the screen (street mode), or a game will start with the first level of the game (arcade mode)



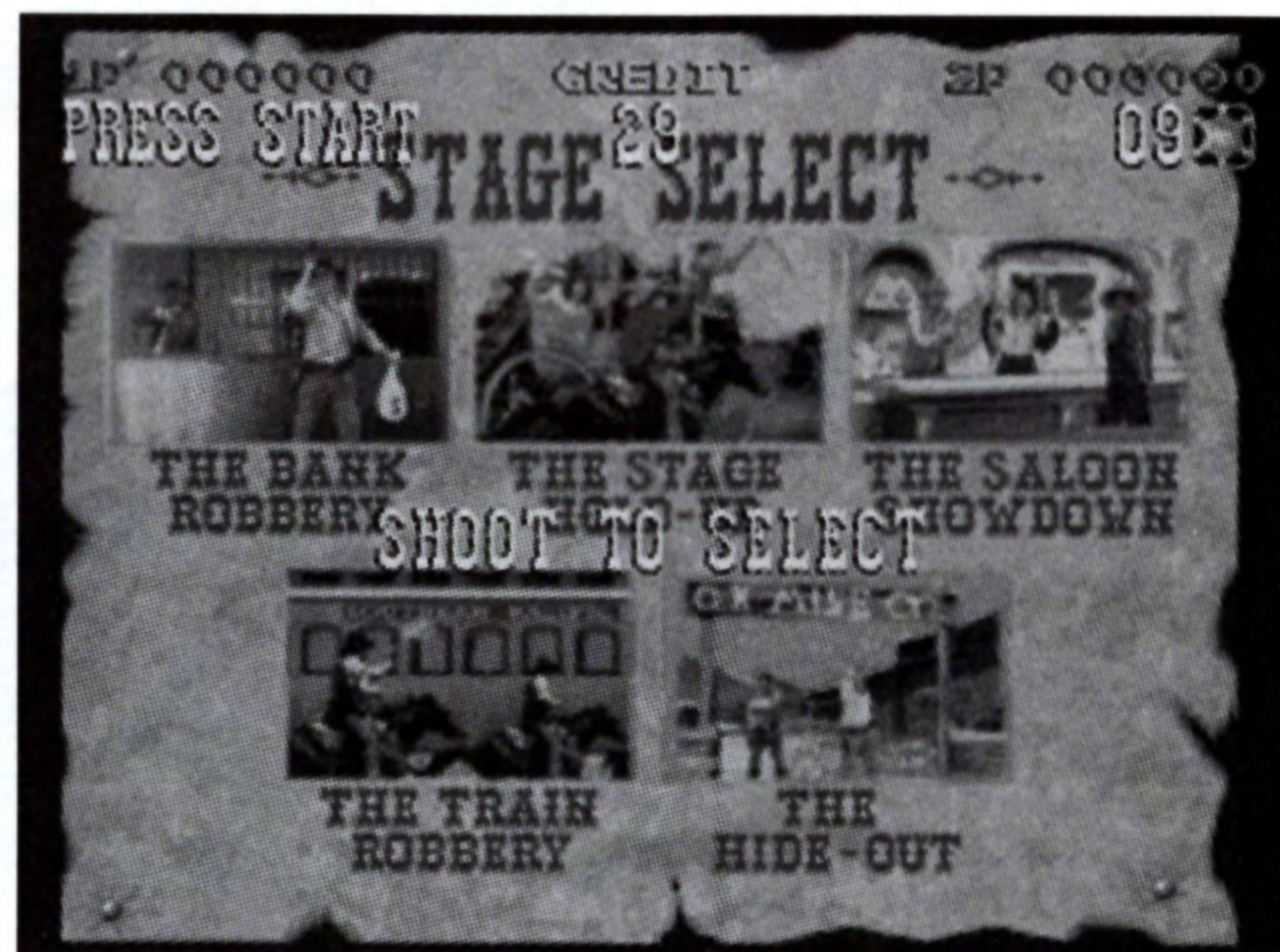
## GAME OBJECTIVES

- Fire the Justifier® (or press the Fire button on the Controller) at enemies, and at any items they throw at you. Remember, you're the good guy—don't hit any innocent bystanders!
- You begin the game with the rank of "Patrolman" (LEI) or "Posse" (LEII). Your rank goes up when you improve your Hit Rate—a percentage of enemies hit per shots fired, minus a penalty if you hit innocent bystanders.
- The game ends when your "lives" run out. If you have Credits remaining, you can use CONTINUE to battle on.
- Defeat the Boss at the end of each stage to clear that stage.

# LETHAL ENFORCERS™

1&11

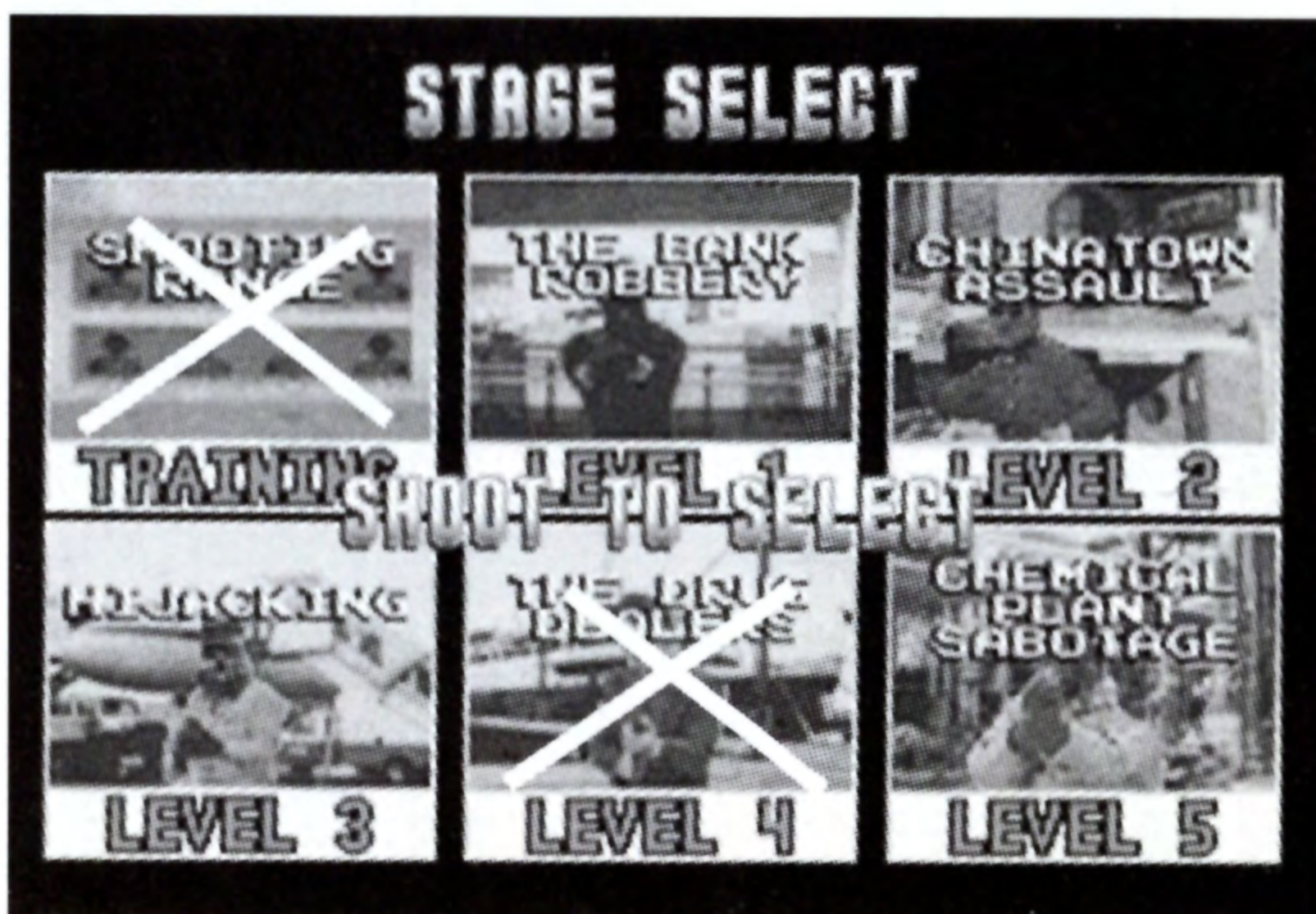
## STAGE SELECT



To select a stage, point and shoot the stage you want to play. If you are not using the Justifier® move the cursor over the desired stage and press the “fire” button.

In LE I, once a stage is completed (unless the game is in Arcade Mode) the game will automatically go back to the STAGE SELECT screen. An “x” will appear over the completed stage/s. To continue your game, choose one of the remaining stages. Once you have completed all of the stages the process is repeated.

A stage which has an “x” over it cannot be replayed until all of the stages are completed or you begin a new game.



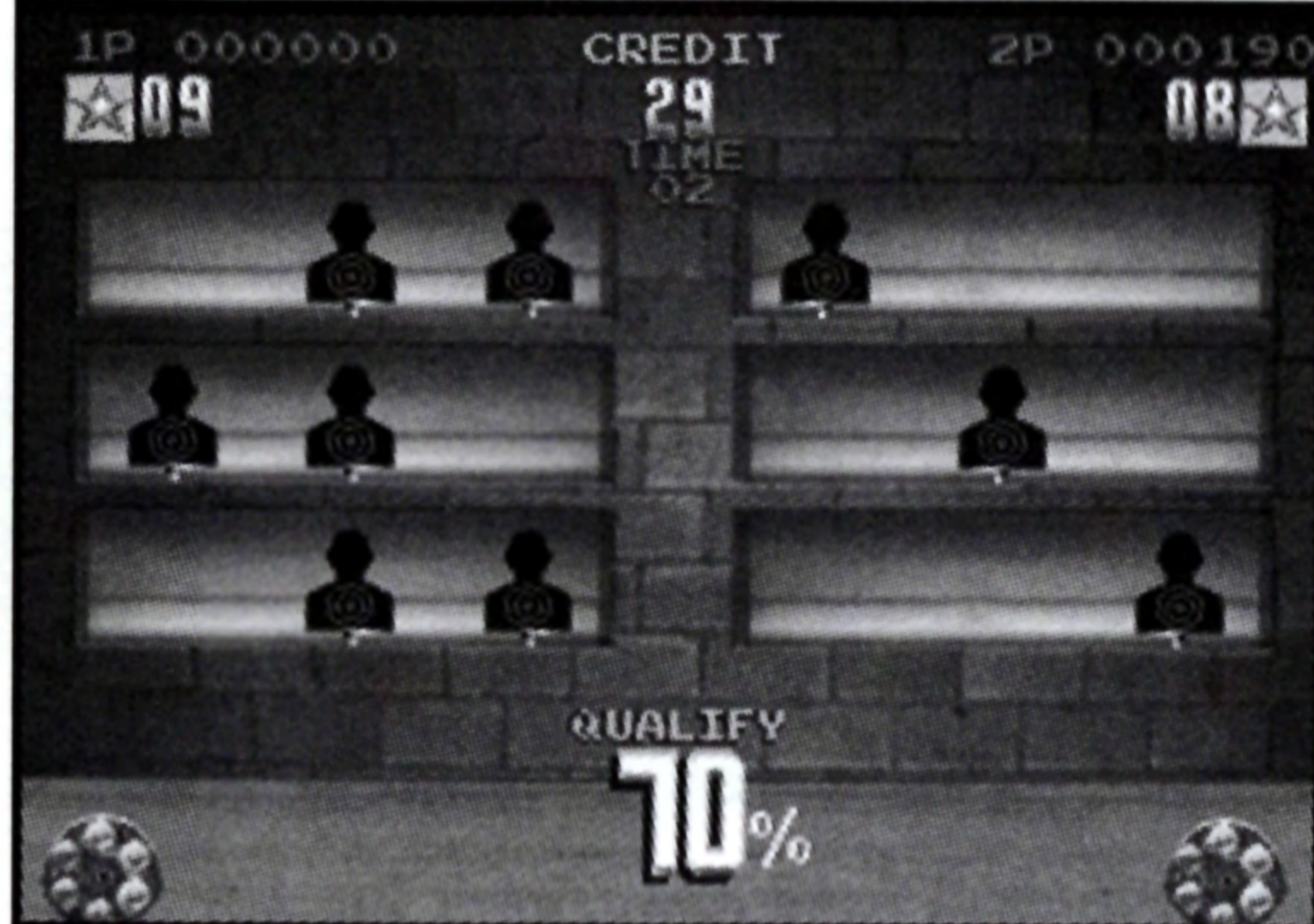
# LETHAL ENFORCERS™

1&11

## LETHAL ENFORCERS® I STAGES

### SHOOTING RANGE

Practice your sharpshooting and quickness here, because there's no room for error on the streets.



### THE BANK ROBBERY

Heavily armed thieves are putting a lot of innocent people at risk. Can you stop them?



### CHINATOWN ASSAULT

Big corruption from little gangs. Stop the outbreak!



# LETHAL ENFORCERS™

1&11

## HIJACKING

**It's your task to see that their political agenda isn't allowed to violate our laws.**



## THE DRUG DEALERS

**If there is a bigger threat to society, we don't know what it is. Put the clamp on these guys.**



## CHEMICAL PLANT SABOTAGE

**Terrorists run amok! Stop them before the threat gets bigger!**



# LETHAL ENFORCERS™

1&11

## LETHAL ENFORCERS® II STAGES



### THE BANK ROBBERY

If you want to keep the peace, you've got to keep your edge.



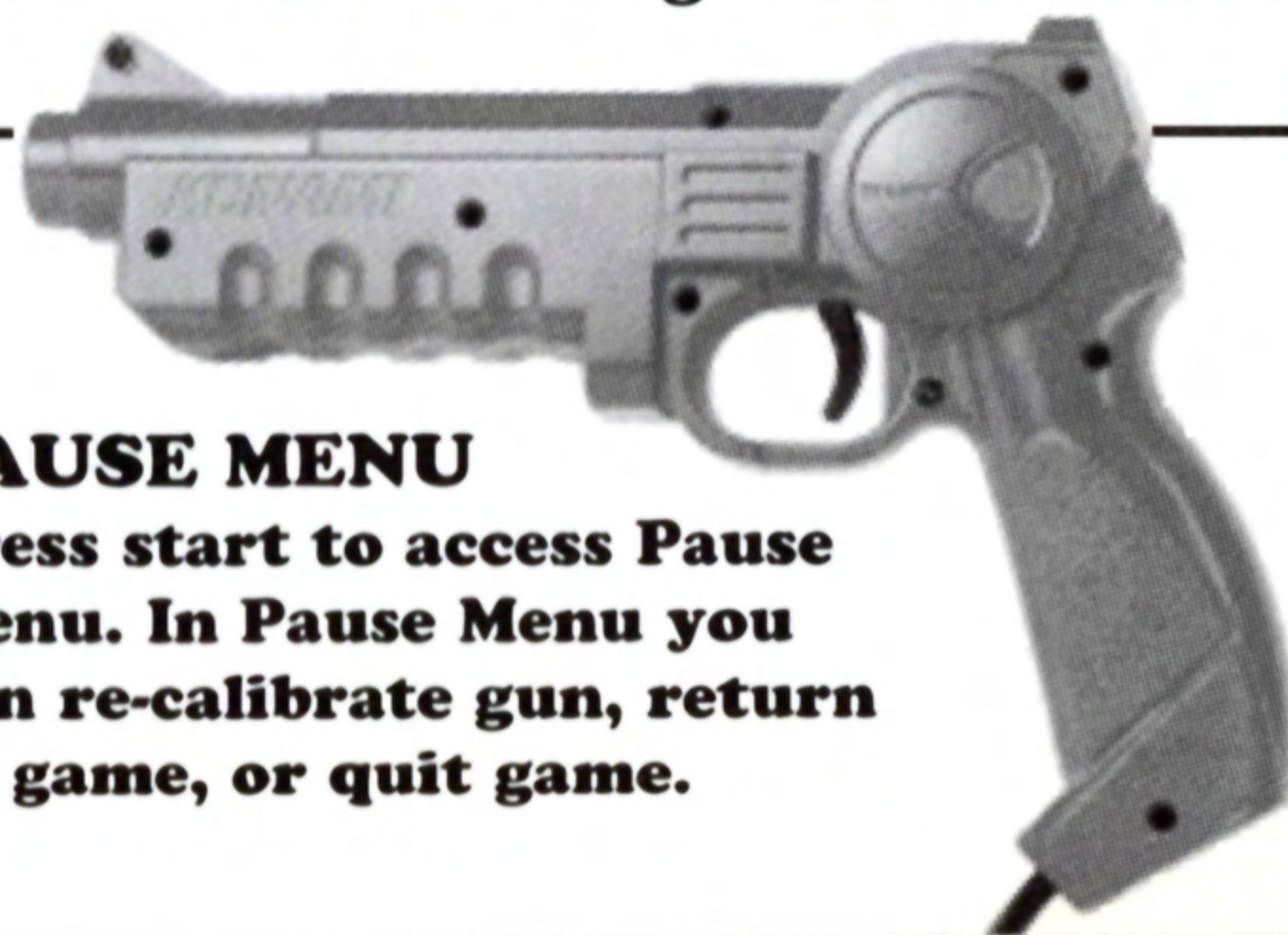
### THE STAGE HOLD-UP

Stagecoaches are easy targets for bandits on horseback—but not in your jurisdiction.

### THE SALOON SHOWDOWN



After a hard day on the range, some cowboys like to let loose in the local saloon. Don't let it get out of hand.



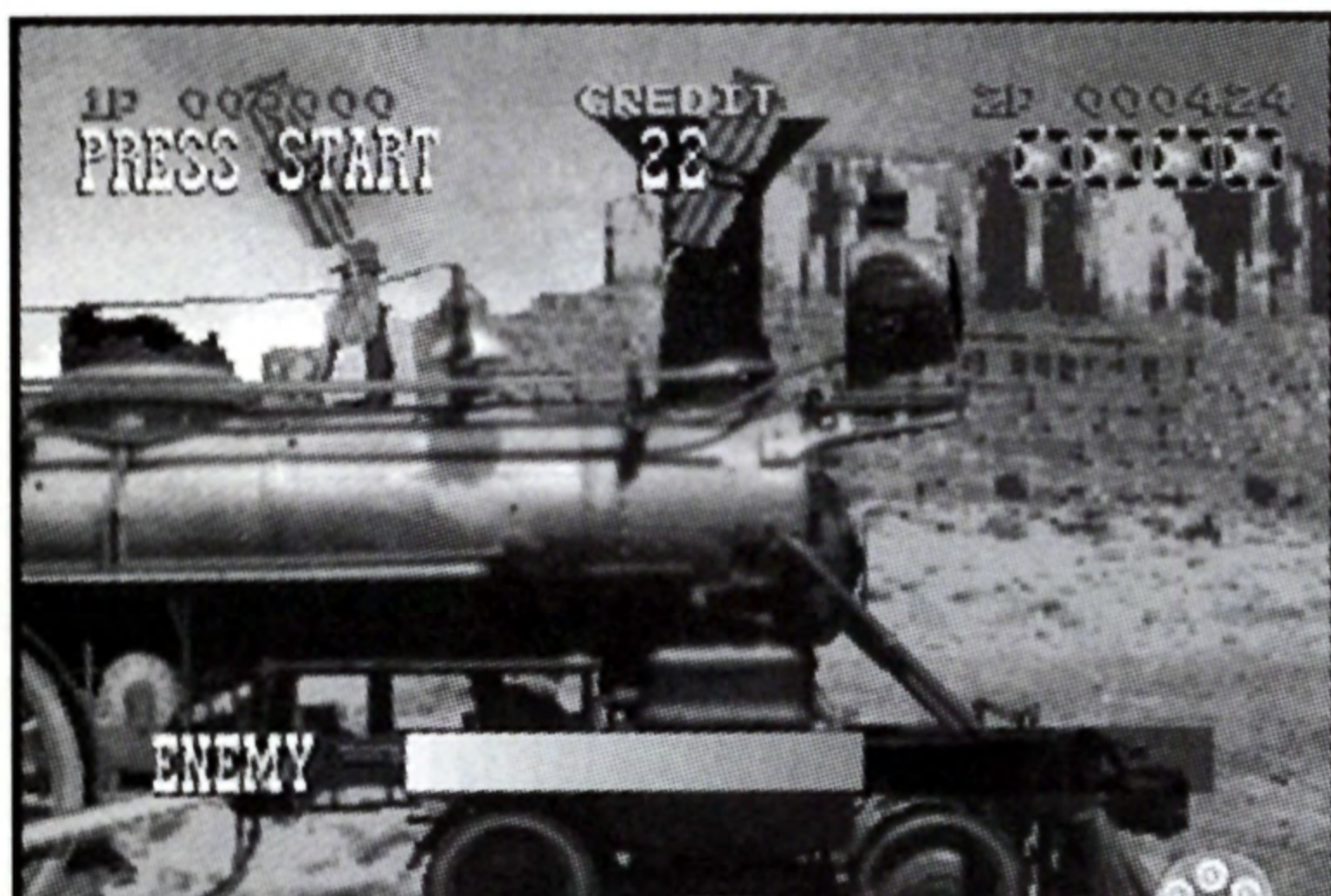
### PAUSE MENU

Press start to access Pause Menu. In Pause Menu you can re-calibrate gun, return to game, or quit game.



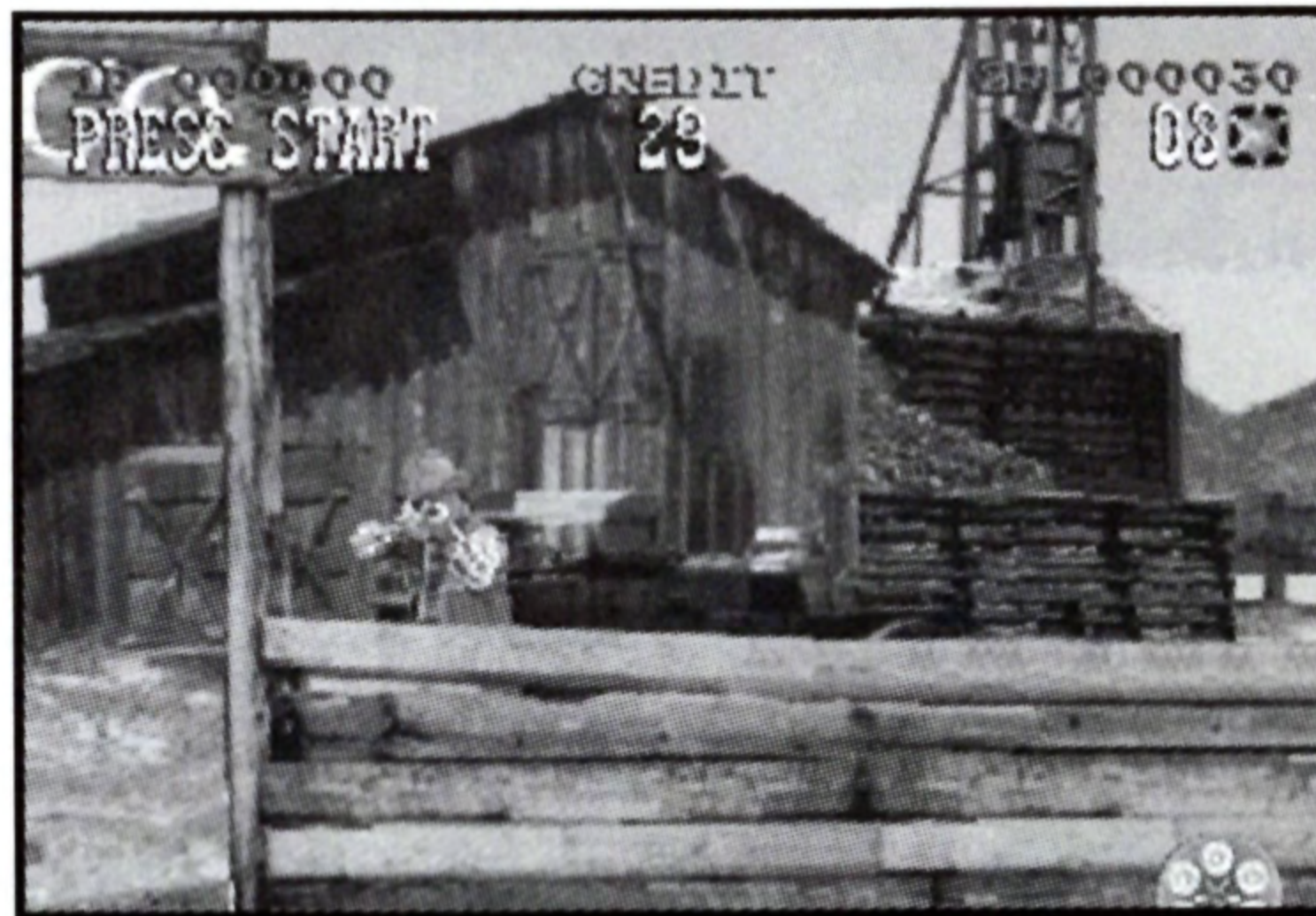
# LETHAL ENFORCERS™

1&11



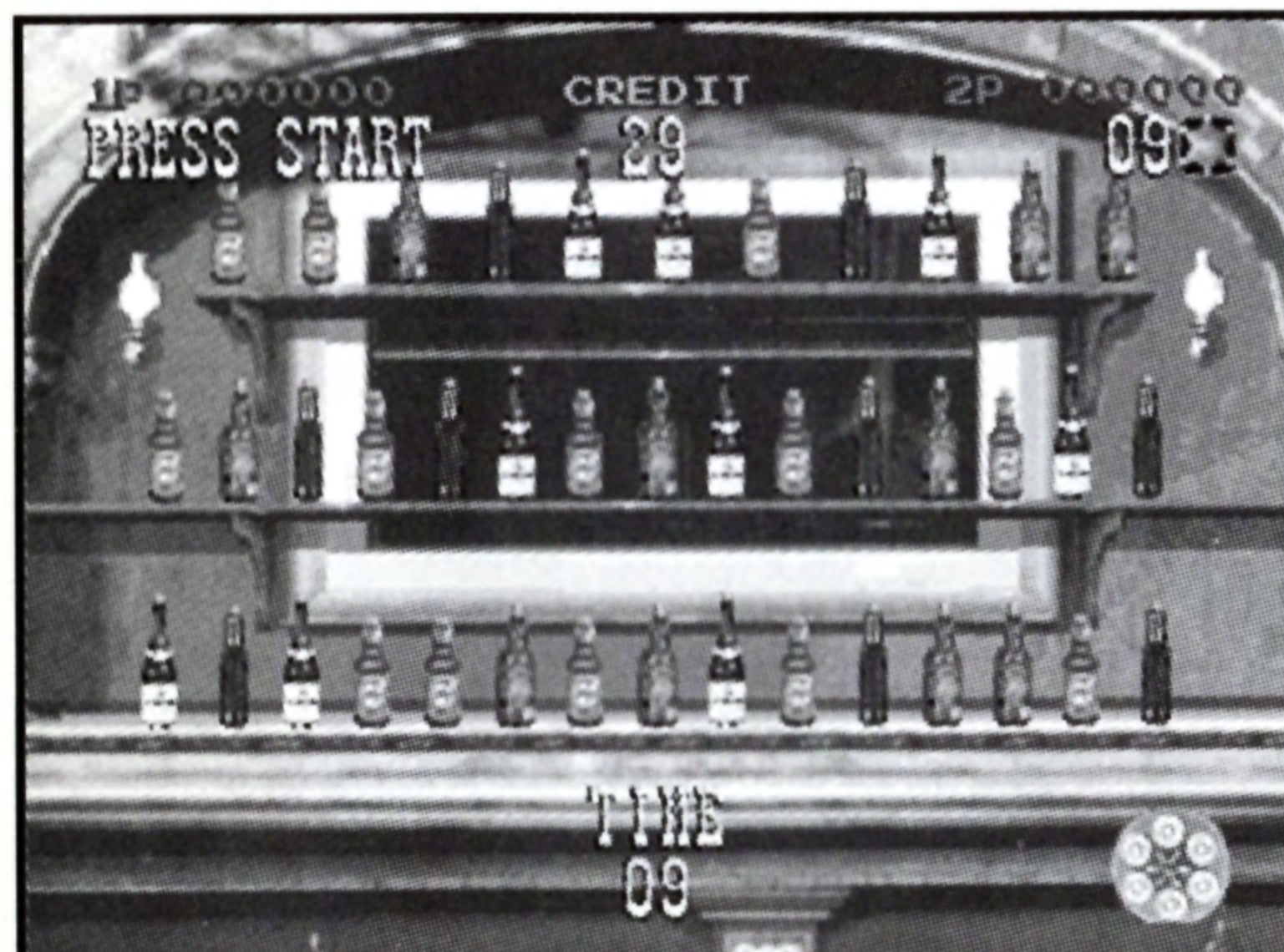
## THE TRAIN ROBBERY

The rail system is the backbone of the West, and you've got to keep it secure.



## THE HIDEOUT

There's a treacherous gang on the outskirts of town—deal with it.



## BONUS STAGE 1



## BONUS STAGE 2

**NOTE: Break the bottles to score points. Accuracy is critical!**

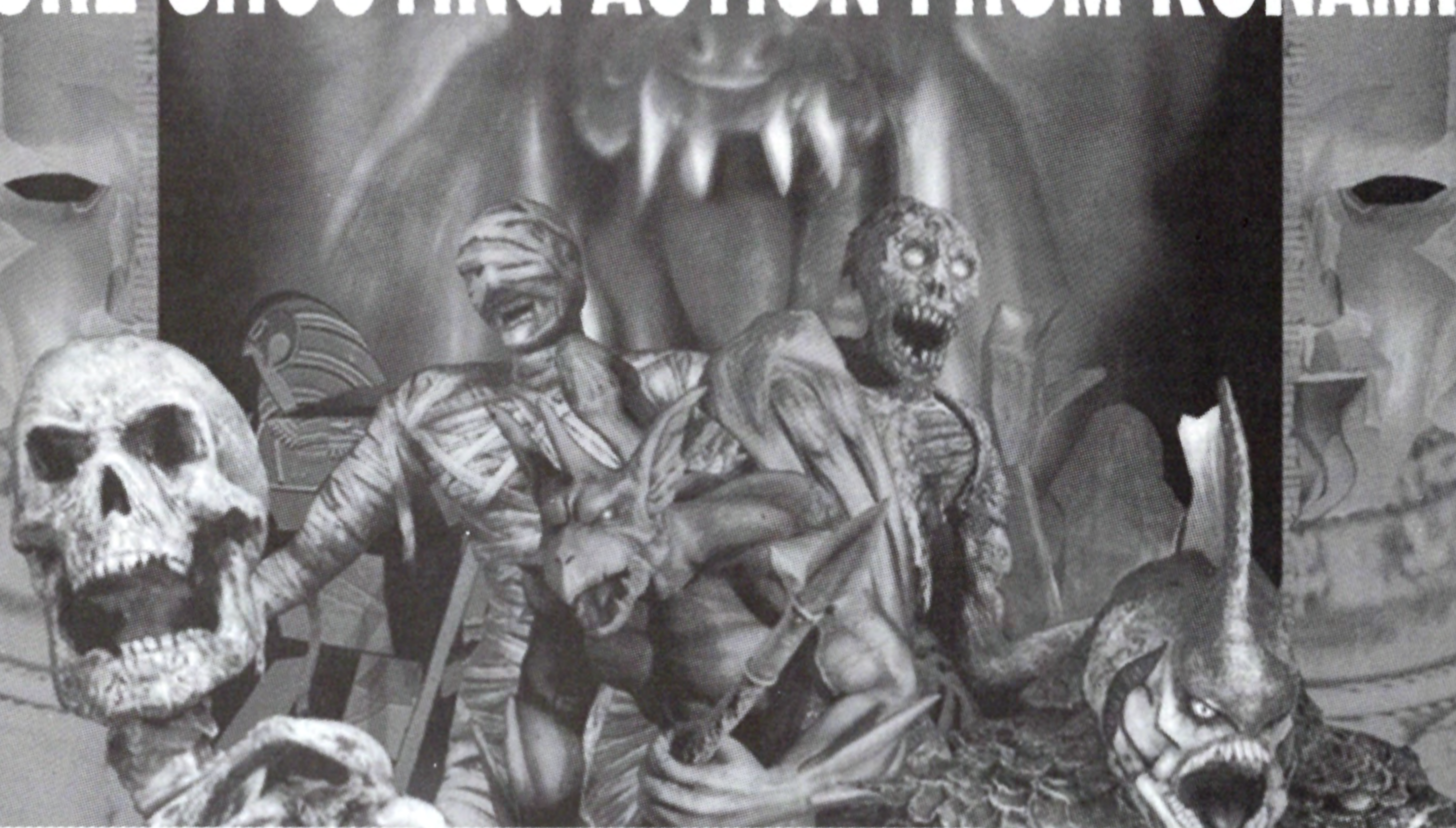


# HANDLING THE JUSTIFIER®

- 1) THE JUSTIFIER® CONTAINS PRECISION PARTS, SO DO NOT EXPOSE IT TO STRONG SHOCKS. DO NOT KNOCK IT AGAINST HARD SURFACES OR STAND ON IT.
- 2) DO NOT TOUCH THE TERMINAL OF THE GUN, OR BEND OR STRETCH THE CORD EXCESSIVELY.
- 3) DO NOT DAMAGE OR BLOCK THE MOUTH OF THE GUN, POINT IT TOWARDS THE SUN, OR EXPOSE IT TO WATER.
- 4) AVOID STORING THE GUN IN PLACES OF EXTREME TEMPERATURE. DO NOT LEAVE IT DIRECT SUNLIGHT OR CLOSE TO OVENS/STOVES, ETC., OR IN DUSTY OR DAMP PLACES.
- 5) DO NOT CLEAN THE GUN WITH THINNER OR BENZENE.
- 6) DO NOT AIM THE GUN AT PEOPLE. DO NOT DISASSEMBLE OR MODIFY IT IN ANY WAY.
- 7) DO NOT USE THIS GAME WITH PROJECTION TELEVISION SETS, FAST SCANNING TELEVISION SETS, HIGH-VISION TELEVISION SETS, OR WIDE-VISION TELEVISION SETS. THIS GAME MAY NOT WORK WITH SOME OLDER TELEVISION SETS.
- 8) DO NOT USE THE GUN OUTDOORS. DO NOT EXPOSE THE GUN TO DIRECT SUNLIGHT EVEN WHEN INDOORS, AS THIS MAY CAUSE MALFUNCTION.
- 9) DO NOT USE INFRARED TELEVISION OR VIDEO REMOTE CONTROLS WHEN PLAYING THIS GAME, AS THIS MAY INTERFERE WITH THE WORKING OF THE GAME.
- 10) FLORESCENT LIGHTS NEAR THE GAME MAY INTERFERE WITH ITS WORKING. KEEP FLORESCENT LIGHTS AWAY FROM THE GAME OR TURN THEM OFF.
- 11) WHEN USING SOFTWARE NOT DESIGNED FOR USE WITH THE GUN, BE SURE TO DISCONNECT THE GUN FROM THE CONTROL TERMINAL.
- 12) DO NOT USE ANY TV MONITOR FILTERS.
- 13) MAKE SURE NO MIRRORS OR REFLECTIVE SURFACES ARE LOCATED CLOSE TO THE TV SCREEN.
- 14) MAKE SURE YOUR TV SCREEN IS CLEAR AND FREE OF DUST.

# CRYPT KILLER

MORE SHOOTING ACTION FROM KONAMI!



# LETHAL ENFORCERS™

## NOTES

---

---

---

---

---

---

---

---

---

---

---

---

---

---

---

---







# JUSTIFIER<sup>®</sup>

*AUTHENTIC ARCADE LIGHT GUN SYSTEM*

**The licensed gun for the Sony PlayStation.**

Send me the \$10 rebate. I've enclosed the UPC symbol from the LETHAL ENFORCERS™ I & II PlayStation™ and from the the UPC symbol from the JUSTIFIER® package and I've circled the prices paid on the original cash register receipts.

I know the game must be purchased between 3/1/97 and 9/15/97, and I'll allow you 8-10 weeks for delivery of my check.

Name \_\_\_\_\_

Address \_\_\_\_\_

City \_\_\_\_\_ State \_\_\_\_\_ Zip code \_\_\_\_\_

Phone ( \_\_\_\_\_ ) \_\_\_\_\_

Birthday \_\_\_\_\_/\_\_\_\_\_/\_\_\_\_\_

LETHAL ENFORCERS™ I & II, JUSTIFIER® and KONAMI are trademarks of Konami Co., Ltd.

©1997 Konami Co., Ltd. All rights reserved.

**Mail to:**  
**JUSTIFIER REBATE**  
**P.O. Box 8622**  
**Prospect Heights, IL 60070**

Game must be purchased between 3/1/97 and 9/15/97. Limit one per household. This form must be used and completed to claim rebate. No facsimiles accepted. Offer good only in the U.S., its territories and Puerto Rico except where prohibited, taxed or restricted. Requests from clubs, groups or organizations will not be honored or acknowledged. Allow 8-10 weeks for delivery of your rebate. All rebate requests must be postmarked by 9/15/97.

## Consumer support

If you feel stuck in the game, or just need a boost, don't worry! You can call the Konami Game Hint & Tip Line for help on this software and all the fine Konami products.

Konami Game Hint & Tip Line

1-900-896-HINT (4468)

☎ 85¢ per minute charge

☎ \$1.15 per minute support from a game counselor

☎ Touch tone phone required

☎ Minors must have parental permission before dialing

Hints are available 24 hours a day. Live support Monday-Friday 8:30 A.M. to 5:00 P.M. CST only. Prices and availability are subject to change. U.S. accessibility only.

## Online Support

Konami is available online from:

CompuServe: Click FIND then type konami. We are in the videogame publisher's forum. To become a CompuServe member, call 1-800-524-3388.

Reach us on the World Wide Web at: [www.konami.com](http://www.konami.com)

E-mail us at [76004.3530@compuserve.com](mailto:76004.3530@compuserve.com)

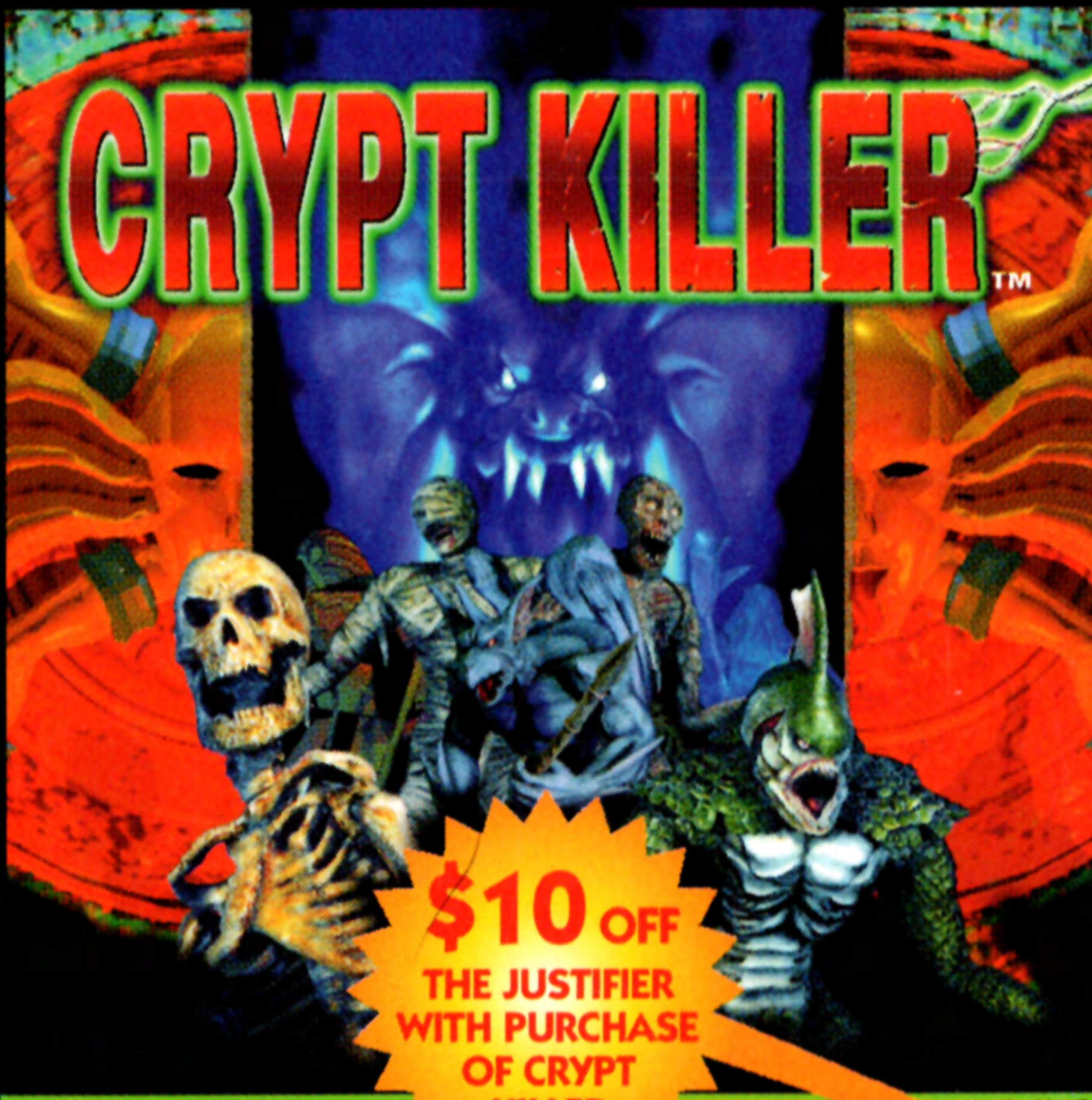
## KONAMI OF AMERICA, INC. LIMITED WARRANTY

Konami of America, Inc. warrants to the original purchaser of this Konami software product that the medium on which this computer program is recorded is free from defects in materials and workmanship for a period of ninety (90) days from the date of purchase. This Konami software program is sold "as is," without express or implied warranty of any kind, and Konami is not liable for any losses or damages of any kind resulting from use of this program. Konami agrees for a period of ninety (90) days to either repair or replace, at its option, free of charge, any Konami software product, postage paid, with proof of date of purchase, at its Factory Service Center. This warranty is not applicable to normal wear and tear. This warranty shall not be applicable and shall be void if the defect in the Konami software product has arisen through abuse, unreasonable use, mistreatment or neglect. THIS WARRANTY IS IN LIEU OF ALL OTHER WARRANTIES AND NO OTHER REPRESENTATIONS OR CLAIMS OF ANY NATURE SHALL BE BINDING ON OR OBLIGATE KONAMI. ANY IMPLIED WARRANTIES APPLICABLE TO THIS SOFTWARE PRODUCT, INCLUDING WARRANTIES OF MERCHANTABILITY AND FITNESS FOR A PARTICULAR PURPOSE, ARE LIMITED TO THE NINETY (90) DAY PERIOD DESCRIBED ABOVE. IN NO EVENT WILL KONAMI BE LIABLE FOR ANY SPECIAL INCIDENTAL OR CONSEQUENTIAL DAMAGES RESULTING FROM POSSESSION, USE OR MALFUNCTION OF THIS KONAMI SOFTWARE PRODUCT.

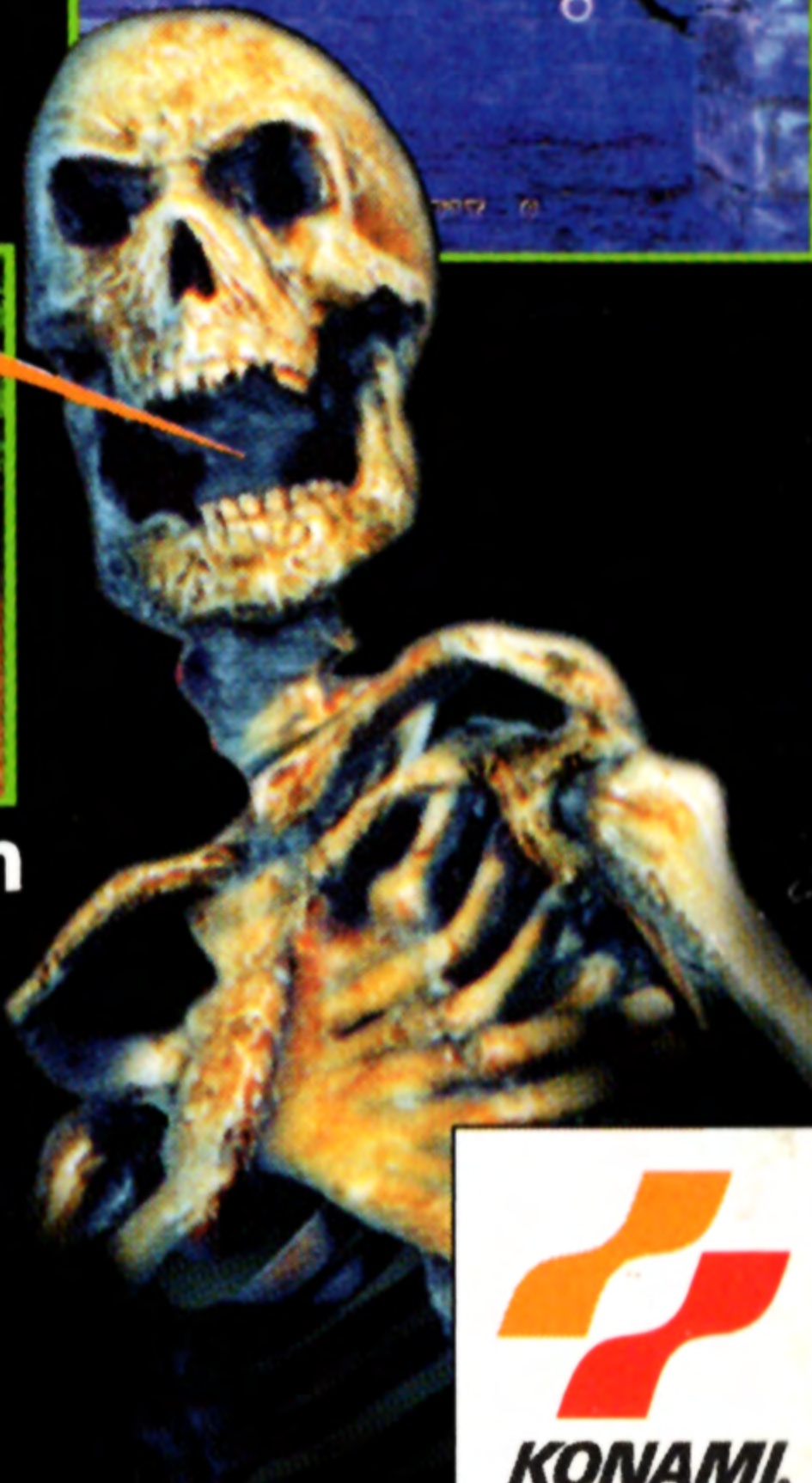
Some states do not allow limitations as to how long an implied warranty lasts and/or exclusions or limitations of incidental or consequential damages so the above limitations and/or exclusions of liability may not apply to you. This warranty gives you specific rights, and you may also have other rights which vary from state to state.



REAL ARCADE SHOOTING ACTION



**\$10 OFF**  
THE JUSTIFIER  
WITH PURCHASE  
OF CRYPT  
KILLER



Reach us on the World Wide Web at: [www.konami.com](http://www.konami.com)

Konami of America, Inc. • 900 Deerfield Pkwy. • Buffalo Grove, IL 60089-4510  
LETHAL ENFORCERS™, CRYPT KILLER™ JUSTIFIER® and Konami® are trademarks of  
Konami Co., Ltd. ©1997 Konami Co., Ltd. All Rights Reserved.



Licensed by Sony Computer Entertainment America for use with the PlayStation game console.  
PlayStation and the PlayStation logos are trademarks of Sony Computer Entertainment Inc. The  
ratings icon is a trademark of the Interactive Digital Software Association. Manufactured and printed  
in the U.S.A. THIS SOFTWARE IS COMPATIBLE WITH PLAYSTATION GAME CONSOLES WITH THE  
NTSC U/C DESIGNATION. U.S. AND FOREIGN PATENTS PENDING.

